



This recognizes that the company listed below is a **Certified Testing Laboratory** member of the International Safe Transit Association (ISTA).

Member ID: 9655

Valid through: May 1, 2026

Location: Memphis, TN, United States

Christian Brothers University


A.J. Gruber
ISTA President


Eric Hiser
ISTA Vice President - Technical



CHRISTIAN BROTHERS UNIVERSITY
Gadomski School of Engineering hosts an

ista -CERTIFIED Transport Testing Lab



The CBU Packaging Lab was an ISTA Certified Testing Laboratory from 2009 to 2020. It stopped the commercial testing service in 2020 and 2021 due to COVID-19 pandemic. Now the lab has been recertified by the International Safe Transit Association (ISTA) to perform the following ISTA protocols:

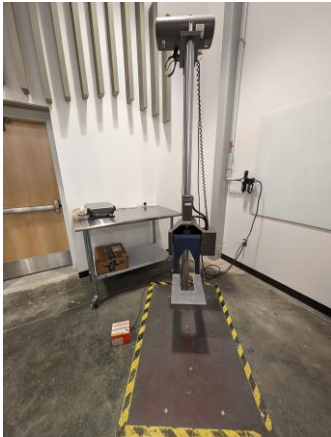
- Non-Simulation Tests: 1A, 1B, 1C, 1D, 1E, 1G, 1H
- Partial Simulation Tests: 2A, 2B, 2C
- General Simulation Tests: 3A, 3B, 3E, 3F, 3K
- Enhanced Simulation Tests: 4AB
- Member Performance Tests: 6-Amazon.com, 6-SAMSCLUB, 6-FEDEX
- Development Tests: 7D

The CBU ISTA Certified Transport Testing Lab is used in various packaging courses. It is also used to prepare students for various certifications, including ISTA Certified Packaging Laboratory Professionals, ISTA Certified Packaging Dynamics Professionals In-Training, and IoPP Certified Packaging Professionals In-Training.

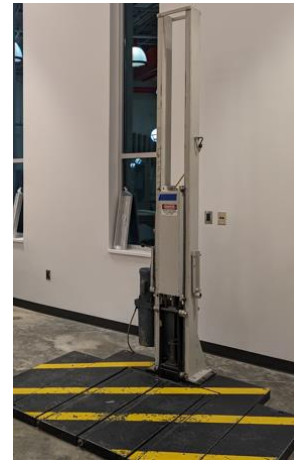
Our team

- **Jacob Byrd**, CPLP Technician
- **Myles Josiah**, PDP In-Training
- **Pong Malasri**, CPP, LPDP, CTP II
- **Bob Moats**, CPLP Technologist
- **Ruben Oropeza**, PDP In-Training
- **Allan Oyuela Valdez**, PDP In-Training
- **Henry Rhodes**
- **Larry Rutledge**

For more information,
please contact Pong Malasri
at pong@cbu.edu or (901) 321-3419



Lansmont PDT-56ED Drop Tester
(175-lb capacity)



L.A.B. AD-500 Drop Tester
(500-lb capacity)



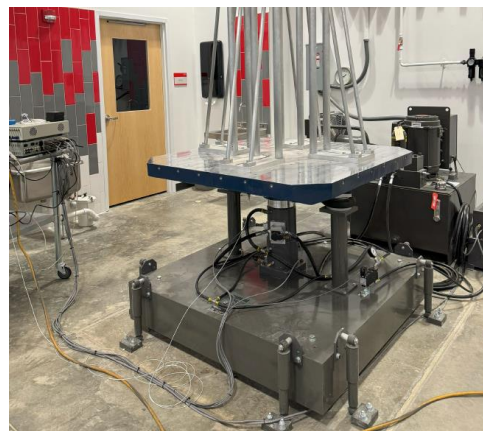
Lansmont PDT 300 Precision Drop Tester
(661 lb maximum package weight, 41.5-in maximum dimension of package front-to-back, 1" to 72" drop height range)



Lansmont Model 1000 Vibration Test System
(75-lb capacity)



Lansmont ELVIS TS-122
(800-lb capacity)



Lansmont 1800 Vibration Tester
(1 – 300 Hz frequency range, 3,044 lb actuator dynamic force)

CBU Packaging



Lansmont Squeezer Compression Table
(5000-lb capacity)



Lansmont 122-15 Compression Tester
(48-in W x 48-in L x 78-in H maximum package dimensions,
1,500 lb – 15,000 lb force range)



Lansmont Shock Tester Model 65/81
(500-lb capacity)



Lansmont 152-4K Inclined Impact Tester
(60"x60" carriage size, 4,000 lb payload capacity, 7.3 ft/sec
velocity)



CSZ Temperature & Humidity Chamber Model ZP-32
(-49F to +374F, 10% to 98% RH,
38"x38"x38" chamber size)



Envirotronics Altitude Chamber Model EA8-2-3-AC
(-90F to +350F, Up to 100000 ft altitude,
24"x24"x24" chamber size)

CBU Packaging



CSZ MCH-3-.33-H/AC MicroClimate with Humidity
(3 CF test space volume, -85F to +375F temperature range, 10% to 95% RH range)



CSZ ZPH-64-2-H/AC Z-Plus Temperature & Humidity
(64 CF test space volume, -30F to + 375F temperature range, 10% to 98% RH range)



CSZ WMSTH-800-2-SC/AC Modular Walk-In Chamber with Humidity
(10-ft W x 10-ft D x 8-ft H test space dimensions, -22F to +104F temperature range, 20% to 95% RH range)



Test-A-Pack Seal Strength Tester



Edge Crush Tester



Mullen Tester



Kongsberg XL22 Sample Table



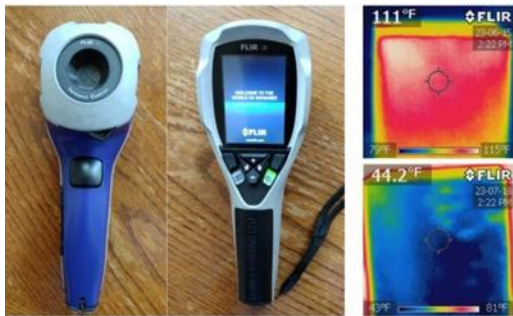
Hounsfield Materials Tester Model H5KS
(Load capacity is 5kN with a speed range from 0.01 to 1000 mm/min)



HBM QuantumX MX 1609KB Thermocouple Amplifier
Type K
(16 channels with data rate up to 600 Hz per channel)



HBM QuantumX MX 1615B Strain Guage Bridge Amplifier
(16 channels with data rate up to 600 20kS/s per channel, full-, half-, or quarter-bridge 120 or 350 Ohm)



FLIR Extech IRC3
Infrared Camera (Thermal Camera)



Lansmont Saver 3M30 plus
(100g capacity, 5000 timer events)

CBU Packaging



CBU Packaging